



# MONTHLY MEMBERSHIP PROGRESS REPORT

District 324B5

Results as of: 6/30/2017

GMT: OPEN

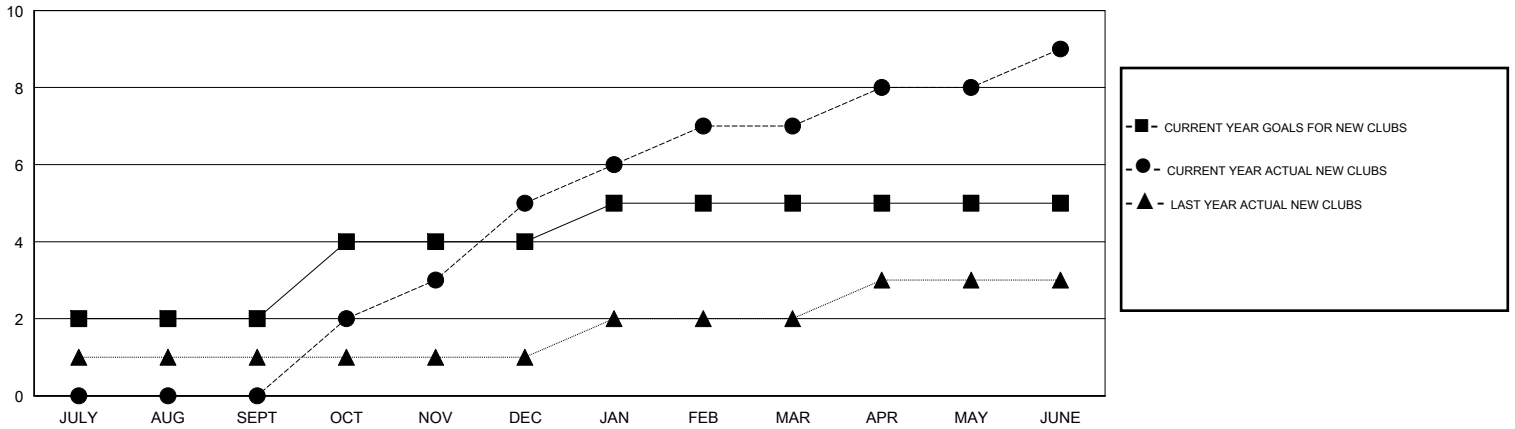
LOCATION INDIA

GMT CA

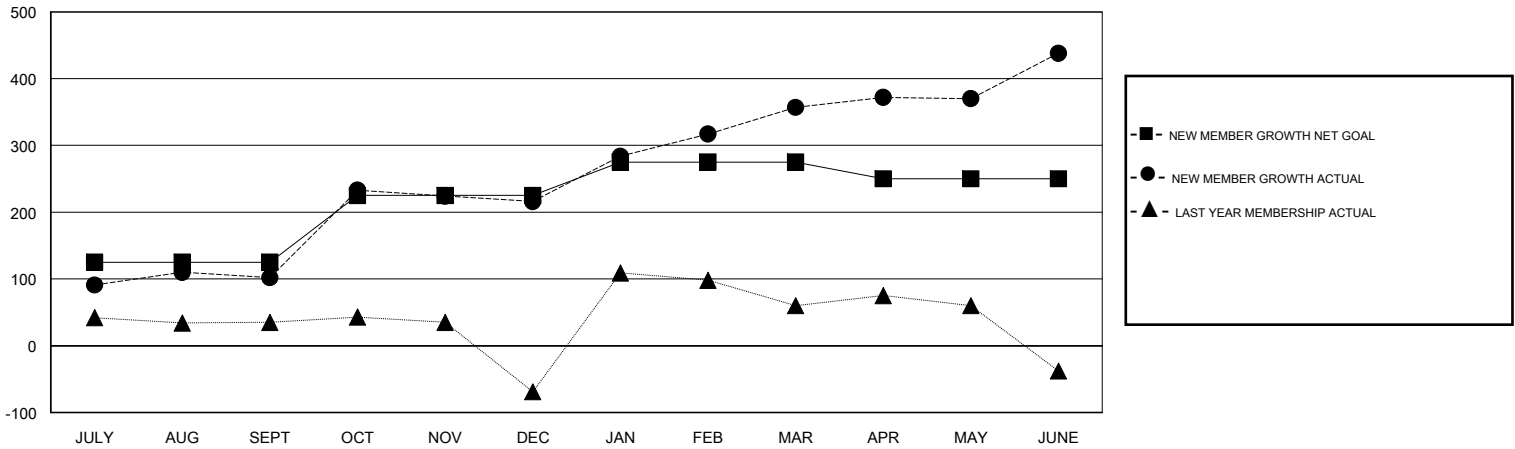
Clubs			
RESULTS FOR 2016-2017			
QUARTER	NEW CLUB GOAL	NEW CLUBS	DROPPED CLUBS
JULY/AUG/SEPT	2	0	0
OCT/NOV/DEC	2	5	0
JAN/FEB/MAR	1	2	0
APR/MAY/JUNE	0	2	0

Members			
RESULTS FOR 2016-2017			
QUARTER	NEW MEMBER GROWTH NET GOAL (not reinstated or transfers)	NEW MEMBER GROWTH ACTUAL (not reinstated or transfers)	DROPPED MEMBERS ACTUAL (including transfers)
JULY/AUG/SEPT	125	152	50
OCT/NOV/DEC	100	214	100
JAN/FEB/MAR	50	177	36
APR/MAY/JUNE	-25	230	149

GOALS AND ACTUAL NEW CLUBS CUMULATIVE



GOALS AND ACTUAL MEMBERS CUMULATIVE



DROPPED CLUBS: 0	60 CLUBS OF 60 ADDED 1 OR MORE NEW MEMBERS	<b>GENDER DISTRIBUTION</b>
		MALE 1,621 (73.28%)
		FEMALE 591 (26.72%)
<b>DROPPED MEMBERS</b>	<a href="#">CLICK HERE FOR CUMULATIVE MEMBERSHIP DATA</a>	TOTAL FAMILY UNIT MEMBERS 1,494
DECEASED 4		FAMILY MEMBERS PAYING HALF DUES 995
CLUB CANCELLED 0		
OTHER 331		
<b>TOTAL 335</b>		